

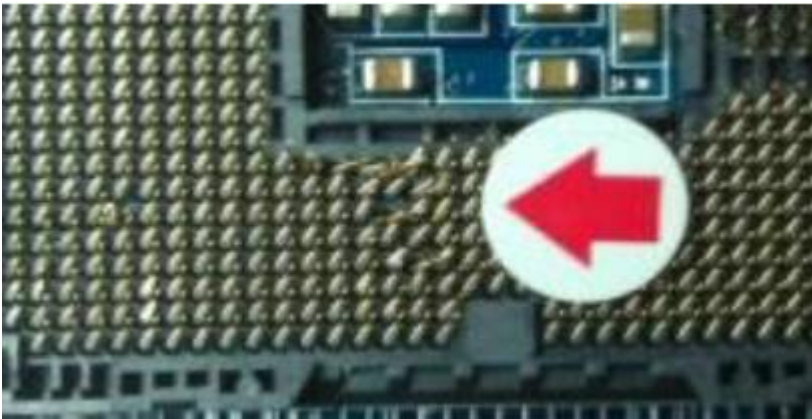
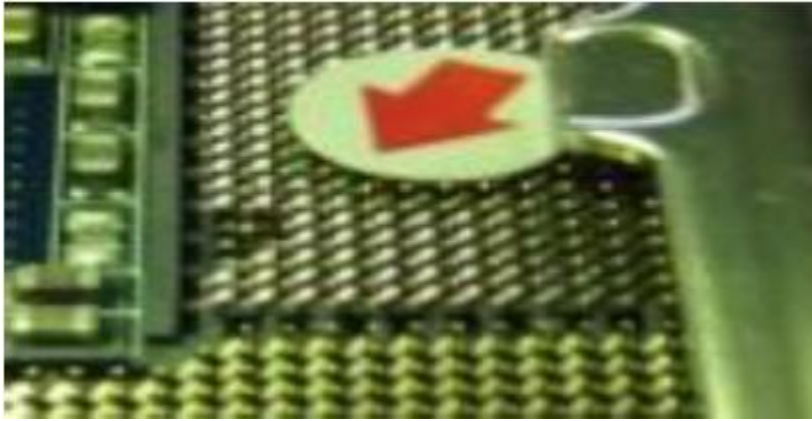
聯想電腦客責判定規範 - 機板類

以下故障現象並不包含在產品正常保固範圍內，須付費處理。

1. 機板受潮 / 液體污損 / 鏽蝕



2. CPU 座針腳彎曲/斷裂



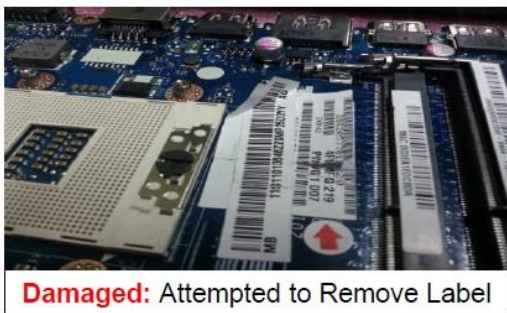
3. 標籤遺失或損壞



Good: Good Vendor Label



Damaged: Vendor Label been removed



Damaged: Attempted to Remove Label



Damaged: Vendor Label Missing

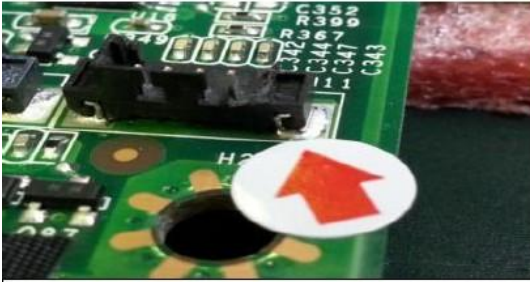
4. 組件或接頭破損 / 元件燒毀或短缺



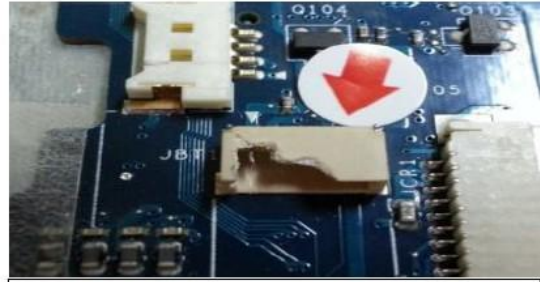
Battery Latch Broken
Left: **Good** Right: **Damaged**



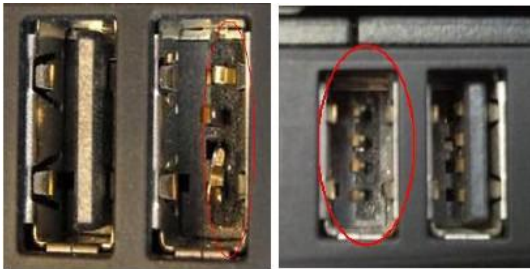
Damaged cable connector



Damaged cable connector



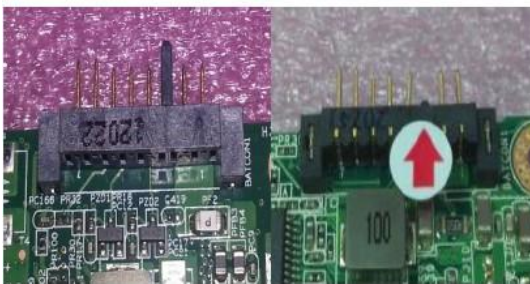
Damaged cable connector



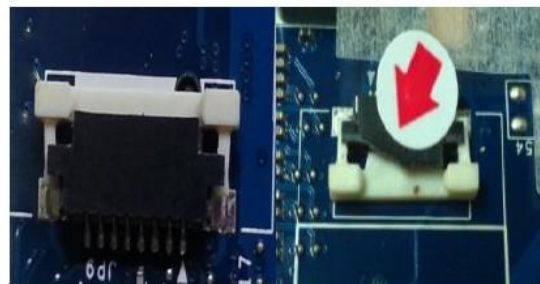
USB Port Broken



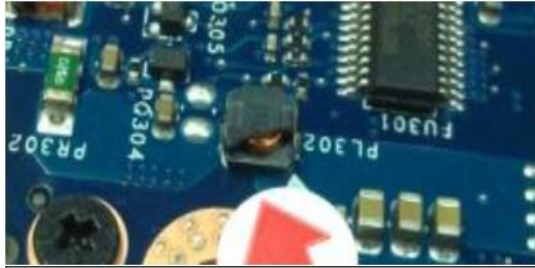
USB Port Broken



Battery Latch Broken
Left: **Good** Right: **Damaged**



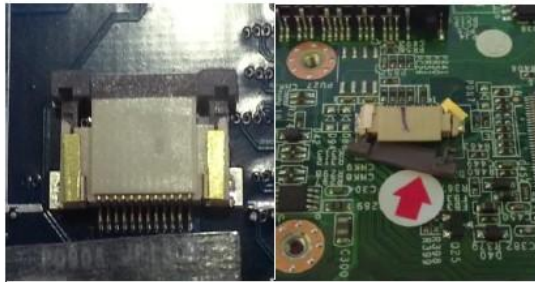
Latch chipped off
Left: **Good** Right: **Damaged**



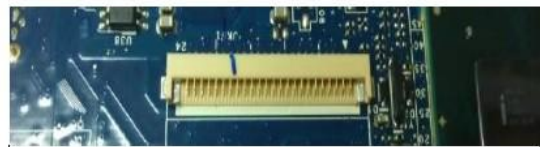
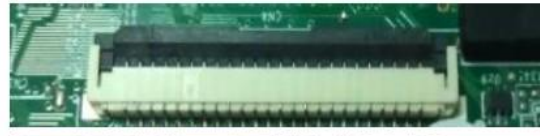
Component Cracked / Chipped



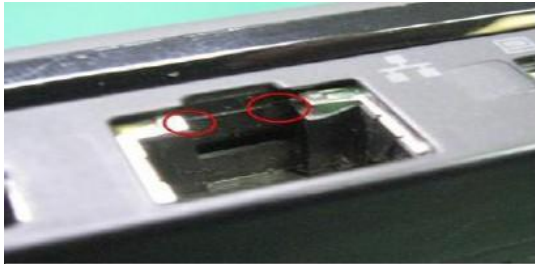
Component Cracked / Chipped



Latch Broken Off
Left: **Good** Right: **Damaged**



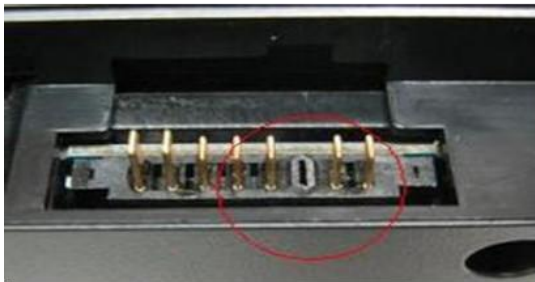
Latch chipped off
Top: **Good** Bottom: **Damaged**



Ethernet Port Broken



Ethernet Port Broken



Battery Slot Broken



Battery Slot Broken

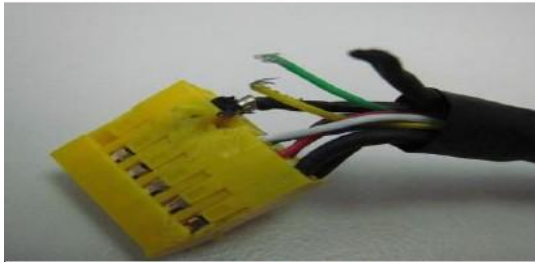
5. 線材或接線損毀



AC Adapter Cable Broken



AC Adapter Cable Broken



Internal Cable Broken



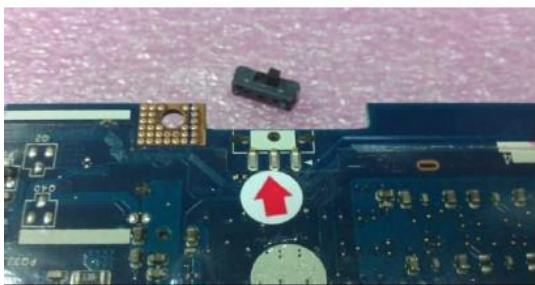
Internal Cable Broken



Keyboard Broken



Wireless Switch Broken



Wireless Switch Broken



Wireless Switch Broken