

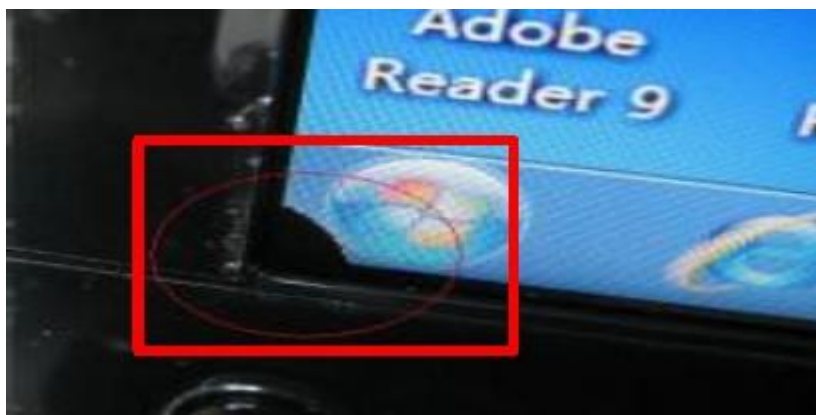
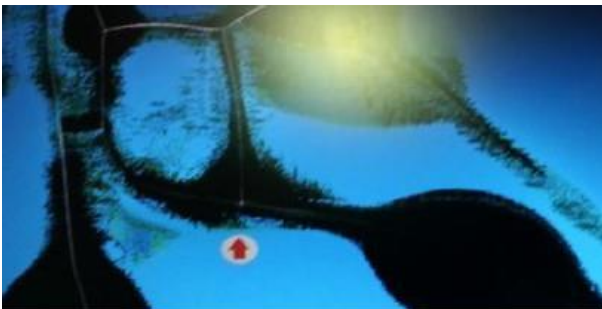
聯想電腦客責判定規範 – LCD 類

以下故障現象並不包含在產品正常保固範圍內，須付費處理。

1. LCD 面板破裂



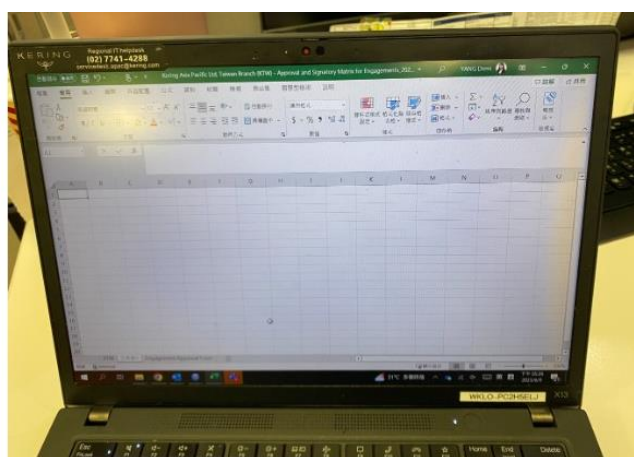
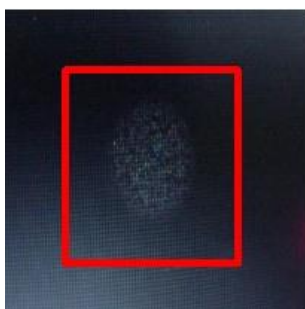
2. LCD 漏液



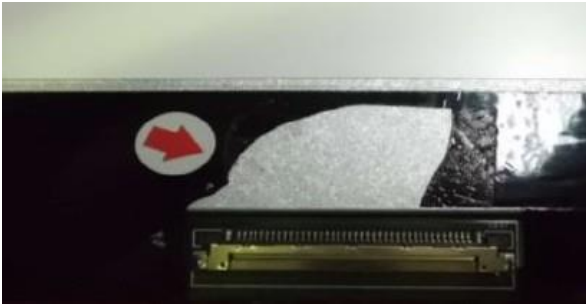
3. LCD 表面刮痕



4. LCD 亮/暗/黃斑



5. LCD Mylar 破損



6. LCD 本體結構件損壞



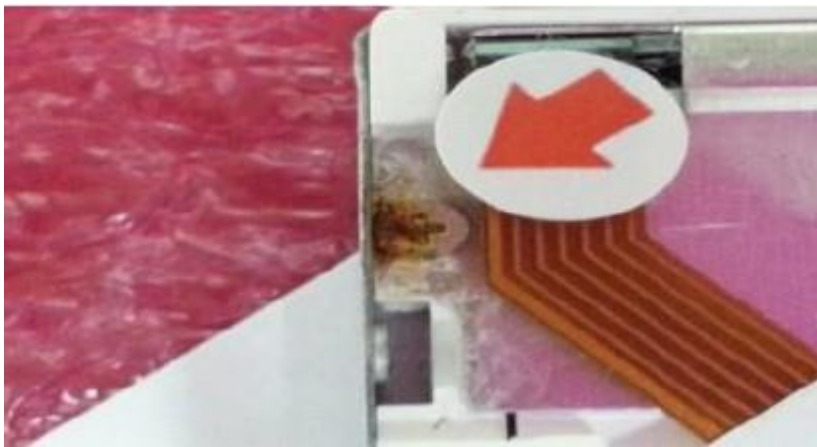
7. LCD 轉軸斷裂



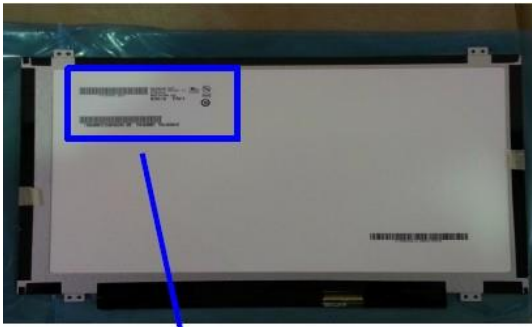
8. LCD 接頭損毀



9. LCD 受潮 / 液污腐蝕 / 生鏽



10. LCD 標籤短缺



Good: LCD with Vendor Label as indicate in the "Blue box"



Bad: Without the vendor label, we can't define the model and which vendor it belongs to